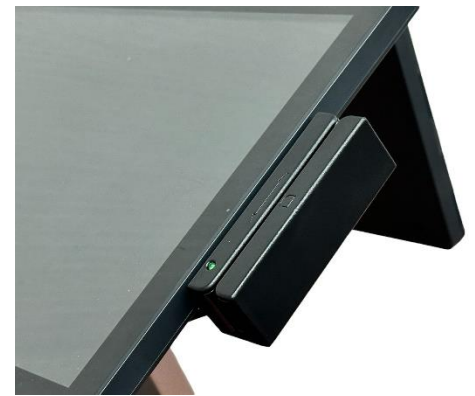




#### 2<sup>nd</sup> TFT option

11.6" 2<sup>nd</sup> TFT display  
(11.6" TFT only, 11.6" TFT + touch + NFC)  
9.7" TFT display  
(9.7" TFT only, 9.7" TFT + Touch+ NFC)



#### MSR option

--MSR only  
--MSR+ iButton, MSR+ NFC( 13.56 Mhz),  
MSR+ FR  
--MSR+ NFC+ FR, MSR+ NFC+ iButton

## State-of-the-art and Modern style

# 15.6" AmplitudSX all-in-one system

### SX stands for " Superior extraordinary".

As we navigate an increasingly complex POS landscape, the need for "**wider**", **rich functions**, **more flexible applications**, and **more Modern & Stylish** design" have ever been more critical, the Birch 15.6" Amplitud SX system is your good choice.

### N97 Fan-less CPU.

15.6" AmplitudSX built in latest Intel Alder Lake-N N97 CPU up to 3.6 Ghz, which is not only a fan-less model, but also with powerful CPU performance to meet the customer's budget.

### 6 X USB+ 2 x COM + 1 x VGA

We understand the POS market operation's complexity, then we position the 15.6" AmplitudSX for a professional market which needs more peripherals connections and more external options, so 15.6" AmplitudSX supports 6 x USB, 2 x COM and 1 x VGA ports, furthermore MSR, ibutton,... NFC and 2<sup>nd</sup> TFT options.



### Foldable stand

15.6" AmplitudSX supports 2 x hinge on the stand which allows to fold the system into flat measurement to save the transportation measurements



# 15.6" Amplitud<sup>SX</sup> (Slim & fashioned)



1 Second Display 2 MSR



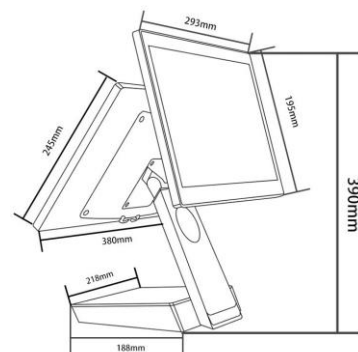
## Specifications

Model	AP156-SN97S2
CPU	Intel® Alder Lake-N N97 up to 3.6 GHz
Memory/RAM	DDR4 8GB
Storage	M.2 SSD 128GB
Main Display	15.6" 16:9 LCD (1920x1080), 300 nits, Pcap multi-touch screen
Mounting	Desktop, or Wall-mounted VESA 100x100
Appearance	Aluminum die-casting + plastic Color in technology black
I/O Ports	2 x USB 3.0 4 x USB 2.0(2 on the side of housing) 1 x RJ45 LAN 10/100/1000M 1 x DC IN 2 x RS232 COM DB9 ports 1 x HP-Jack (Mic-IN / Line-OUT) 1 x RJ11 cash drawer port 1 x VGA DB15 port
Power Input	DC+12V/5A 60W Adaptor
Environment	Operating temperature 0°C ~ 40°C Storage temperature -20°C ~ 60°C
Peripheral(Optional)	MSR: 3-Tracks MSR Second Display: 11.6" 1366x768 Display By Project Request: 11.6" 2nd Display with Pcap touch, NFC reader or 2D reader
Others	Speaker: 2Wx2
Dimensions (WxHxD)	380 x 339 x 188 mm
Weight (N.W./G.W)	6.6Kgs /7.2Kgs
Operating System	Support Windows 10 / Windows 11 / Linux
Certification	CE, FCC, RoHS



BIRCH TECHNOLOGY INC

7F-13, No# 79, Hsin Tai 5th Rd., Sec 1, Hsichih, New Taipei City, Taiwan  
Tel:886-2-2698-9596 Fax:886-2-2698-9597  
E-mail:sales@mail.birch.com.tw <http://www.e-birch.com>



15.6" Amplitud SX